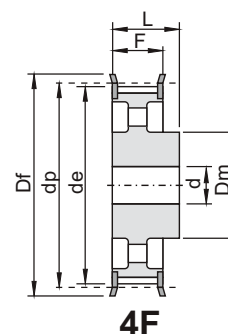
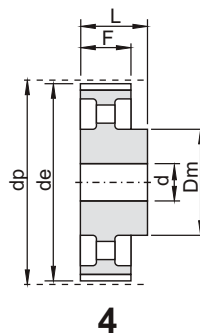
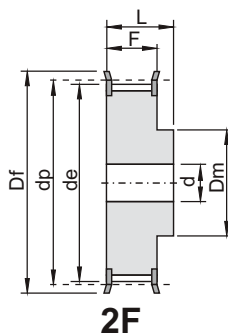


KOŁA ZĘBATE O PODZIAŁCE CALOWEJ

ISO 5294



H 075

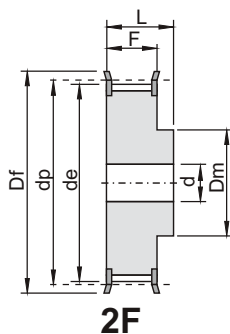
podziałka: 1/2" (12,7 mm)

koła dla pasa o szerokości: 3/4" (19,05 mm)

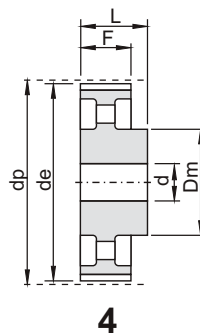
kod	typ	rysunek	materiał	Z	dp	de	Df	Dm	F	L	d	nr flanszy	[kg]
M0160	14 H 075	2F	St	14	56,59	55,22	63	40	26,40	40	10	309	0,58
M0161	15 H 075	2F	St	15	60,64	59,27	66	45	26,40	40	10	310	0,69
M0162	16 H 075	2F	St	16	64,68	63,31	71	45	26,40	40	10	311	0,77
M0163	17 H 075	2F	St	17	68,72	67,35	75	45	26,40	40	12	312	0,84
M0164	18 H 075	2F	St	18	72,77	71,39	79	55	26,40	40	12	313	1,01
M0165	19 H 075	2F	St	19	76,81	75,44	83	60	26,40	40	12	314	1,15
M0166	20 H 075	2F	St	20	80,85	79,48	87	62	26,40	40	12	315	1,27
M0167	21 H 075	2F	St	21	84,89	83,52	91	65	26,40	40	12	316	1,41
M0168	22 H 075	2F	St	22	88,94	87,56	93	68	26,40	40	12	317	1,55
M0169	23 H 075	2F	St	23	92,98	91,61	97	72	26,40	40	12	318	1,71
M0170	24 H 075	2F	St	24	97,03	95,65	103	72	26,40	40	12	320	1,83
M0171	25 H 075	2F	St	25	101,06	99,69	106	72	26,40	40	12	321	1,96
M0172	26 H 075	2F	St	26	105,11	103,73	111	80	26,40	40	12	322	2,19
M0173	27 H 075	2F	St	27	109,15	107,78	115	80	26,40	40	12	323	2,32
M0174	28 H 075	2F	St	28	113,19	111,82	119	80	26,40	40	12	325	2,47
M0175	30 H 075	2F	St	30	121,29	119,90	127	80	26,40	40	14	327	2,76
M0176	32 H 075	2F	St	32	129,36	127,99	135	80	26,40	40	14	328	3,08
M0177	33 H 075	2F	St	33	133,40	132,03	140	80	26,40	40	14	330	3,25
M0178	34 H 075	2F	St	34	137,45	136,07	143	80	26,40	40	14	331	3,42
M0179	35 H 075	2F	St	35	141,49	140,12	148	80	26,40	40	14	333	3,61
M0180	36 H 075	2F	St	36	145,53	144,16	152	80	26,40	40	14	334	3,79
M0181	38 H 075	2F	St	38	153,62	152,24	158	80	26,40	40	14	335	4,16
M0182	40 H 075	2F	St	40	161,70	160,33	168	80	26,40	40	14	338	4,58
M0183	44 H 075	4F	GG	44	177,87	176,50	184	80	26,40	40	18	339	2,57
M0184	48 H 075	4F	GG	48	194,04	192,67	200	90	26,40	45	18	342	3,56
M0185	50 H 075	4	GG	50	202,13	200,75	-	90	26,40	45	18	-	3,74

KOŁA ZĘBATE O PODZIAŁCE CALOWEJ

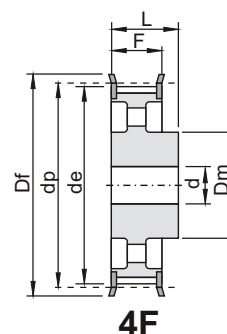
ISO 5294



2F



4



4F

H 100

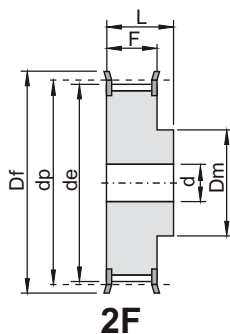
podziałka: 1/2" (12,7 mm)

koła dla pasa o szerokości: 1" (25,4 mm)

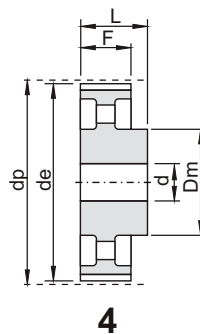
kod	typ	rysunek	materiał	Z	dp	de	Df	Dm	F	L	d	nr flanszy	[kg]
M0186	14 H 100	2F	St	14	56,59	55,22	63	40	31,80	45	12	309	0,65
M0187	15 H 100	2F	St	15	60,64	59,27	66	45	31,80	45	12	310	0,77
M0188	16 H 100	2F	St	16	64,68	63,31	71	45	31,80	45	12	311	0,87
M0189	17 H 100	2F	St	17	68,72	67,35	75	45	31,80	45	12	312	0,97
M0190	18 H 100	2F	St	18	72,77	71,39	79	55	31,80	45	12	313	1,16
M0191	19 H 100	2F	St	19	76,81	75,44	83	60	31,80	45	14	314	1,30
M0192	20 H 100	2F	St	20	80,85	79,48	87	62	31,80	45	14	315	1,44
M0193	21 H 100	2F	St	21	84,89	83,52	91	65	31,80	45	14	316	1,60
M0194	22 H 100	2F	St	22	88,94	87,56	93	68	31,80	45	14	317	1,76
M0195	23 H 100	2F	St	23	92,98	91,61	97	72	31,80	45	14	318	1,94
M0196	24 H 100	2F	St	24	97,03	95,65	103	72	31,80	45	14	320	2,09
M0197	25 H 100	2F	St	25	101,06	99,69	106	72	31,80	45	14	321	2,24
M0198	26 H 100	2F	St	26	105,11	103,73	111	80	31,80	45	14	322	2,49
M0199	27 H 100	2F	St	27	109,15	107,78	115	80	31,80	45	14	323	2,66
M0200	28 H 100	2F	St	28	113,19	111,82	119	80	31,80	45	14	325	2,83
M0201	29 H 100	2F	St	29	117,23	115,86	123	80	31,80	45	14	326	3,01
M0202	30 H 100	2F	St	30	121,29	119,90	127	80	31,80	45	14	327	3,19
M0203	32 H 100	2F	St	32	129,36	127,99	135	80	31,80	45	14	328	3,57
M0204	33 H 100	2F	St	33	133,40	132,03	140	80	31,80	45	14	330	3,79
M0205	34 H 100	2F	St	34	137,45	136,07	143	80	31,80	45	14	331	3,99
M0206	35 H 100	2F	St	35	141,49	140,12	148	80	31,80	45	14	333	4,20
M0207	36 H 100	2F	St	36	145,53	144,16	152	80	31,80	45	14	334	4,44
M0208	38 H 100	2F	St	38	153,62	152,24	158	80	31,80	45	14	335	4,90
M0209	40 H 100	2F	St	40	161,70	160,33	168	80	31,80	45	14	338	5,39
M0210	44 H 100	4F	GG	44	177,87	176,50	184	80	31,80	50	18	339	3,37
M0211	45 H 100	4F	GG	45	181,91	180,54	192	80	31,80	50	18	340	3,57
M0212	48 H 100	4F	GG	48	194,04	192,67	200	90	31,80	50	18	342	4,10
M0213	50 H 100	4	GG	50	202,13	200,75	-	90	31,80	50	18	-	4,24
M0214	52 H 100	4	GG	52	210,21	208,84	-	90	31,80	50	18	-	4,32
M0215	58 H 100	4	GG	58	234,47	233,09	-	90	31,80	50	18	-	4,61
M0216	60 H 100	4	GG	60	242,55	241,18	-	100	31,80	50	18	-	5,30
M0217	70 H 100	4	GG	70	282,98	281,61	-	100	31,80	55	18	-	6,13
M0218	72 H 100	4	GG	72	291,06	289,69	-	120	31,80	55	18	-	7,47
M0219	84 H 100	4	GG	84	339,57	338,20	-	120	31,80	55	18	-	8,52
M0220	96 H 100	4	GG	96	388,08	386,71	-	120	31,80	60	18	-	10,25
M0221	120 H 100	4	GG	120	485,10	483,73	-	120	31,80	60	18	-	13,09

KOŁA ZĘBATE O PODZIAŁCE CALOWEJ

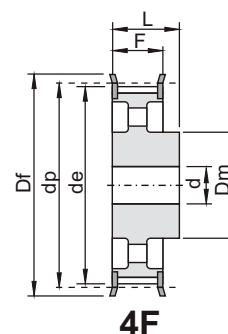
ISO 5294



2F



4



4F

H 150

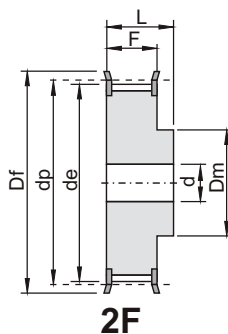
podziałka: 1/2" (12,7 mm)

koła dla pasa o szerokości: 1"1/2 (38,1 mm)

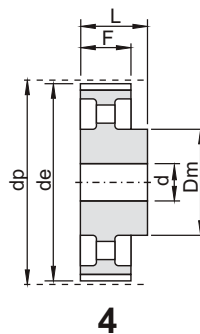
kod	typ	rysunek	materiał	Z	dp	de	Df	Dm	F	L	d	nr flanszy	[kg]
M0222	14 H 150	2F	St	14	56,59	55,22	63	40	46,00	58	18	309	0,81
M0223	15 H 150	2F	St	15	60,64	59,27	66	45	46,00	58	18	310	0,97
M0224	16 H 150	2F	St	16	64,68	63,31	71	45	46,00	58	18	311	1,11
M0225	17 H 150	2F	St	17	68,72	67,35	75	45	46,00	58	18	312	1,25
M0226	18 H 150	2F	St	18	72,77	71,39	79	55	46,00	58	18	313	1,48
M0227	19 H 150	2F	St	19	76,81	75,44	83	60	46,00	58	18	314	1,68
M0228	20 H 150	2F	St	20	80,85	79,48	87	62	46,00	58	18	315	1,88
M0229	21 H 150	2F	St	21	84,89	83,52	91	65	46,00	58	18	316	2,08
M0230	22 H 150	2F	St	22	88,94	87,56	93	68	46,00	58	18	317	2,30
M0231	23 H 150	2F	St	23	92,98	91,61	97	72	46,00	58	18	318	2,54
M0232	24 H 150	2F	St	24	97,03	95,65	103	72	46,00	58	18	320	2,75
M0233	25 H 150	2F	St	25	101,06	99,69	106	72	46,00	58	18	321	2,97
M0234	26 H 150	2F	St	26	105,11	103,73	111	80	46,00	58	18	322	3,29
M0235	27 H 150	2F	St	27	109,15	107,78	115	80	46,00	58	18	323	3,52
M0236	28 H 150	2F	St	28	113,19	111,82	119	80	46,00	58	18	325	3,78
M0237	29 H 150	2F	St	29	117,23	115,86	123	80	46,00	58	18	326	4,03
M0238	30 H 150	2F	St	30	121,29	119,90	127	80	46,00	58	18	327	4,29
M0239	32 H 150	2F	St	32	129,36	127,99	135	80	46,00	58	18	328	4,86
M0240	33 H 150	2F	St	33	133,40	132,03	140	80	46,00	58	18	330	5,15
M0241	34 H 150	2F	St	34	137,45	136,07	143	80	46,00	58	18	331	5,46
M0242	35 H 150	2F	St	35	141,49	140,12	148	80	46,00	58	18	333	5,78
M0243	36 H 150	2F	St	36	145,53	144,16	152	80	46,00	58	18	334	6,09
M0244	38 H 150	2F	St	38	153,62	152,24	158	80	46,00	58	18	335	6,74
M0245	40 H 150	2F	St	40	161,70	160,33	168	80	46,00	58	18	338	7,46
M0246	44 H 150	4F	GG	44	177,87	176,50	184	80	46,00	58	18	339	4,29
M0247	45 H 150	4F	GG	45	181,91	180,54	192	80	46,00	58	18	340	4,44
M0248	48 H 150	4F	GG	48	194,04	192,67	200	90	46,00	65	18	342	5,41
M0249	50 H 150	4	GG	50	202,13	200,75	-	90	46,00	65	18	-	5,59
M0250	52 H 150	4	GG	52	210,21	208,84	-	90	46,00	65	18	-	5,79
M0251	58 H 150	4	GG	58	234,47	233,09	-	90	46,00	65	18	-	6,15
M0252	60 H 150	4	GG	60	242,55	241,18	-	100	46,00	65	18	-	7,08
M0253	70 H 150	4	GG	70	282,98	281,61	-	100	46,00	65	24	-	7,77
M0254	72 H 150	4	GG	72	291,06	289,69	-	120	46,00	65	24	-	9,70
M0255	84 H 150	4	GG	84	339,57	338,20	-	120	46,00	65	24	-	10,99
M0256	96 H 150	4	GG	96	388,08	386,71	-	120	46,00	65	24	-	12,24
M0257	120 H 150	4	GG	120	485,10	483,73	-	120	46,00	65	24	-	16,17

KOŁA ZĘBATE O PODZIAŁCE CALOWEJ

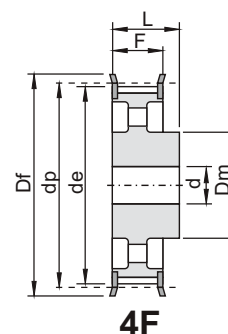
ISO 5294



2F



4



4F

H 200

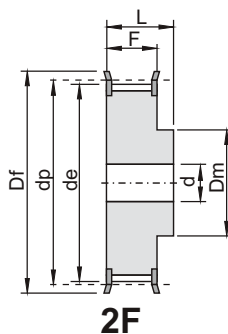
podziałka: 1/2" (12,7 mm)

koła dla pasa o szerokości: 2" (50,8 mm)

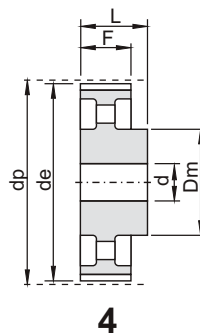
kod	typ	rysunek	materiał	Z	dp	de	Df	Dm	F	L	d	nr flanszy	[kg]
M0258	14 H 200	2F	St	14	56,59	55,22	63	40	58,70	70	18	309	1,10
M0259	15 H 200	2F	St	15	60,64	59,27	66	45	58,70	70	18	310	1,33
M0260	16 H 200	2F	St	16	64,68	63,31	71	45	58,70	70	18	311	1,54
M0261	17 H 200	2F	St	17	68,72	67,35	75	45	58,70	70	18	312	1,69
M0262	18 H 200	2F	St	18	72,77	71,39	79	55	58,70	70	18	313	1,95
M0263	19 H 200	2F	St	19	76,81	75,44	83	60	58,70	70	18	314	2,20
M0264	20 H 200	2F	St	20	80,85	79,48	87	62	58,70	70	18	315	2,44
M0265	21 H 200	2F	St	21	84,89	83,52	91	65	58,70	70	18	316	2,70
M0266	22 H 200	2F	St	22	88,94	87,56	93	68	58,70	70	18	317	2,97
M0267	23 H 200	2F	St	23	92,98	91,61	97	72	58,70	70	18	318	3,25
M0268	24 H 200	2F	St	24	97,03	95,65	103	72	58,70	70	18	320	3,56
M0269	25 H 200	2F	St	25	101,06	99,69	106	72	58,70	70	18	321	3,81
M0270	26 H 200	2F	St	26	105,11	103,73	111	80	58,70	70	18	322	4,18
M0271	27 H 200	2F	St	27	109,15	107,78	115	80	58,70	70	18	323	4,49
M0272	28 H 200	2F	St	28	113,19	111,82	119	80	58,70	70	18	325	4,81
M0273	29 H 200	2F	St	29	117,23	115,86	123	80	58,70	70	18	326	5,14
M0274	30 H 200	2F	St	30	121,29	119,90	127	80	58,70	70	18	327	5,47
M0275	32 H 200	2F	St	32	129,36	127,99	135	80	58,70	70	18	328	6,17
M0276	33 H 200	2F	St	33	133,40	132,03	140	80	58,70	70	18	330	6,56
M0277	34 H 200	2F	St	34	137,45	136,07	143	80	58,70	70	18	331	6,94
M0278	35 H 200	2F	St	35	141,49	140,12	148	80	58,70	70	18	333	7,34
M0279	36 H 200	2F	St	36	145,53	144,16	152	80	58,70	70	18	334	7,75
M0280	38 H 200	2F	St	38	153,62	152,24	158	80	58,70	70	18	335	8,62
M0281	40 H 200	2F	St	40	161,70	160,33	168	80	58,70	70	18	338	9,50
M0282	44 H 200	4F	GG	44	177,87	176,50	184	80	58,70	70	18	339	5,14
M0283	45 H 200	4F	GG	45	181,91	180,54	192	80	58,70	70	18	340	5,38
M0284	48 H 200	4F	GG	48	194,04	192,67	200	90	58,70	75	24	342	6,29
M0285	50 H 200	4	GG	50	202,13	200,75	-	90	58,70	75	24	-	6,68
M0286	52 H 200	4	GG	52	210,21	208,84	-	90	58,70	75	24	-	6,81
M0287	58 H 200	4	GG	58	234,47	233,09	-	90	58,70	75	24	-	7,26
M0288	60 H 200	4	GG	60	242,55	241,18	-	100	58,70	75	24	-	8,25
M0289	70 H 200	4	GG	70	282,98	281,61	-	100	58,70	75	28	-	9,20
M0290	72 H 200	4	GG	72	291,06	289,69	-	120	58,70	75	28	-	11,09
M0291	84 H 200	4	GG	84	339,57	338,20	-	120	58,70	75	28	-	12,63
M0292	96 H 200	4	GG	96	388,08	386,71	-	120	58,70	75	28	-	14,51
M0293	120 H 200	4	GG	120	485,10	483,73	-	120	58,70	75	28	-	19,15

KOŁA ZĘBATE O PODZIAŁCE CALOWEJ

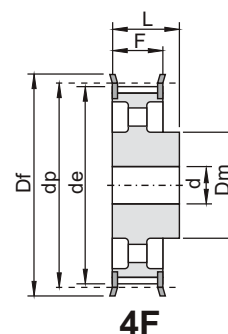
ISO 5294



2F



4



4F

H 300

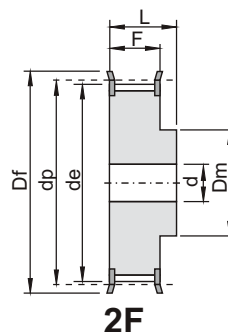
podziałka: 1/2" (12,7 mm)

koła dla pasa o szerokości: 3" (76,2 mm)

kod	typ	rysunek	materiał	Z	dp	de	Df	Dm	F	L	d	nr flanszy	[kg]
M0294	14 H 300	2F	St	14	56,59	55,22	63	40	85,70	100	18	309	1,64
M0295	15 H 300	2F	St	15	60,64	59,27	66	45	85,70	100	18	310	1,91
M0296	16 H 300	2F	St	16	64,68	63,31	71	45	85,70	100	18	311	2,16
M0297	17 H 300	2F	St	17	68,72	67,35	75	45	85,70	100	18	312	2,43
M0298	18 H 300	2F	St	18	72,77	71,39	79	55	85,70	100	18	313	2,80
M0299	19 H 300	2F	St	19	76,81	75,44	83	60	85,70	100	18	314	3,16
M0300	20 H 300	2F	St	20	80,85	79,48	87	62	85,70	100	18	315	3,50
M0301	21 H 300	2F	St	21	84,89	83,52	91	65	85,70	100	18	316	3,87
M0302	22 H 300	2F	St	22	88,94	87,56	93	68	85,70	100	18	317	4,26
M0303	23 H 300	2F	St	23	92,98	91,61	97	72	85,70	100	18	318	4,68
M0304	24 H 300	2F	St	24	97,03	95,65	103	72	85,70	100	18	320	5,08
M0305	25 H 300	2F	St	25	101,06	99,69	106	72	85,70	100	18	321	5,45
M0306	26 H 300	2F	St	26	105,11	103,73	111	80	85,70	100	18	322	6,01
M0307	27 H 300	2F	St	27	109,15	107,78	115	80	85,70	100	18	323	6,45
M0308	28 H 300	2F	St	28	113,19	111,82	119	80	85,70	100	18	325	6,91
M0309	30 H 300	2F	St	30	121,29	119,90	127	80	85,70	100	18	327	7,90
M0310	32 H 300	2F	St	32	129,36	127,99	135	80	85,70	100	18	328	8,92
M0311	33 H 300	2F	St	33	133,40	132,03	140	80	85,70	100	18	330	9,46
M0312	34 H 300	2F	St	34	137,45	136,07	143	80	85,70	100	18	331	10,04
M0313	35 H 300	2F	St	35	141,49	140,12	148	80	85,70	100	18	333	10,62
M0314	36 H 300	2F	St	36	145,53	144,16	152	80	85,70	100	18	334	11,24
M0315	38 H 300	2F	St	38	153,62	152,24	158	80	85,70	100	18	335	12,44
M0316	40 H 300	2F	St	40	161,70	160,33	168	80	85,70	100	18	338	13,80
M0317	44 H 300	4F	GG	44	177,87	176,50	184	80	85,70	100	24	339	7,22
M0318	48 H 300	4F	GG	48	194,04	192,67	200	90	85,70	100	24	342	8,60
M0319	50 H 300	4	GG	50	202,13	200,75	-	90	85,70	100	24	-	8,99
M0320	58 H 300	4	GG	58	234,47	233,09	-	90	85,70	100	24	-	10,04
M0321	60 H 300	4	GG	60	242,55	241,18	-	100	85,70	100	24	-	11,18
M0322	72 H 300	4	GG	72	291,06	289,69	-	120	85,70	100	28	-	15,07
M0323	84 H 300	4	GG	84	339,57	338,20	-	120	85,70	100	28	-	16,97
M0324	96 H 300	4	GG	96	388,08	386,71	-	120	85,70	100	28	-	19,86
M0325	120 H 300	4	GG	120	485,10	483,73	-	120	85,70	100	28	-	25,91

KOŁA ZĘBATE O PODZIAŁCE CALOWEJ

ISO 5294



XH 200

podziałka: 7/8" (22,22 mm)

koła dla pasa o szerokości: 2" (50,8 mm)

kod	typ	rysunek	materiał	Z	dp	de	Df	Dm	F	L	d	nr flanszy	[kg]
M0326	18 XH 200	2F	St	18	127,34	124,55	138	100	65	80	24	401	6,00
M0327	19 XH 200	2F	St	19	134,41	131,62	146	100	65	80	24	402	6,60
M0328	20 XH 200	2F	St	20	141,49	138,69	154	100	65	80	24	403	7,30
M0329	21 XH 200	2F	St	21	148,56	145,77	160	110	65	80	24	404	8,73
M0330	22 XH 200	2F	St	22	155,64	152,84	168	110	65	80	24	405	9,55
M0331	24 XH 200	2F	St	24	169,79	166,99	183	120	65	80	24	406	11,47
M0332	25 XH 200	2F	St	25	176,86	174,07	188	120	65	80	24	407	12,46
M0333	26 XH 200	2F	St	26	183,93	181,14	198	120	65	80	24	409	13,47
M0334	27 XH 200	2F	St	27	191,01	188,22	200	120	65	80	24	410	14,42
M0335	28 XH 200	2F	St	28	198,09	195,29	211	120	65	80	24	411	15,44
M0336	30 XH 200	2F	St	30	212,23	209,44	226	120	65	80	24	412	17,69
M0337	32 XH 200	2F	St	32	226,38	223,59	240	120	65	80	24	414	19,95
M0338	34 XH 200	2F	St	34	240,53	237,74	256	120	65	80	24	415	22,75

XH 300

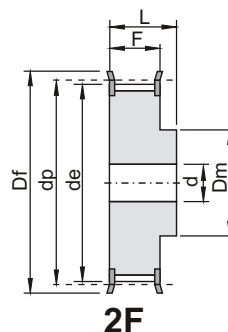
podziałka: 7/8" (22,22 mm)

koła dla pasa o szerokości: 3" (76,2 mm)

kod	typ	rysunek	materiał	Z	dp	de	Df	Dm	F	L	d	nr flanszy	[kg]
M0339	18 XH 300	2F	St	18	127,34	124,55	138	100	92	110	28	401	8,90
M0340	19 XH 300	2F	St	19	134,41	131,62	146	100	92	110	28	402	9,20
M0341	20 XH 300	2F	St	20	141,49	138,69	154	100	92	110	28	403	10,61
M0342	21 XH 300	2F	St	21	148,56	145,77	160	110	92	110	28	404	11,87
M0343	22 XH 300	2F	St	22	155,64	152,84	168	110	92	110	28	405	13,08
M0344	24 XH 300	2F	St	24	169,79	166,99	183	120	92	110	28	406	15,77
M0345	25 XH 300	2F	St	25	176,86	174,07	188	120	92	110	28	407	17,13
M0346	26 XH 300	2F	St	26	183,93	181,14	198	120	92	110	28	409	18,55
M0347	27 XH 300	2F	St	27	191,01	188,22	200	120	92	110	28	410	19,90
M0348	28 XH 300	2F	St	28	198,09	195,29	211	150	92	110	28	411	22,27
M0349	30 XH 300	2F	St	30	212,23	209,44	226	150	92	110	28	412	25,39
M0350	32 XH 300	2F	St	32	226,38	223,59	240	150	92	110	28	414	28,73
M0351	34 XH 300	2F	St	34	240,53	237,74	256	150	92	110	28	415	34,20

KOŁA ZĘBATE O PODZIAŁCE CALOWEJ

ISO 5294



XH 200

podziałka: 7/8" (22,22 mm)

koła dla pasa o szerokości: 2" (50,8 mm)

kod	typ	rysunek	materiał	Z	dp	de	Df	Dm	F	L	d	nr flanszy	[kg]
M0326	18 XH 200	2F	St	18	127,34	124,55	138	100	65	80	24	401	6,00
M0327	19 XH 200	2F	St	19	134,41	131,62	146	100	65	80	24	402	6,60
M0328	20 XH 200	2F	St	20	141,49	138,69	154	100	65	80	24	403	7,30
M0329	21 XH 200	2F	St	21	148,56	145,77	160	110	65	80	24	404	8,73
M0330	22 XH 200	2F	St	22	155,64	152,84	168	110	65	80	24	405	9,55
M0331	24 XH 200	2F	St	24	169,79	166,99	183	120	65	80	24	406	11,47
M0332	25 XH 200	2F	St	25	176,86	174,07	188	120	65	80	24	407	12,46
M0333	26 XH 200	2F	St	26	183,93	181,14	198	120	65	80	24	409	13,47
M0334	27 XH 200	2F	St	27	191,01	188,22	200	120	65	80	24	410	14,42
M0335	28 XH 200	2F	St	28	198,09	195,29	211	120	65	80	24	411	15,44
M0336	30 XH 200	2F	St	30	212,23	209,44	226	120	65	80	24	412	17,69
M0337	32 XH 200	2F	St	32	226,38	223,59	240	120	65	80	24	414	19,95
M0338	34 XH 200	2F	St	34	240,53	237,74	256	120	65	80	24	415	22,75

XH 300

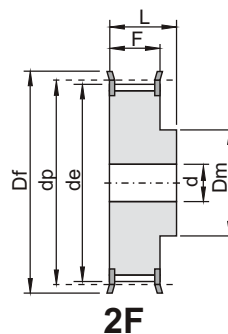
podziałka: 7/8" (22,22 mm)

koła dla pasa o szerokości: 3" (76,2 mm)

kod	typ	rysunek	materiał	Z	dp	de	Df	Dm	F	L	d	nr flanszy	[kg]
M0339	18 XH 300	2F	St	18	127,34	124,55	138	100	92	110	28	401	8,90
M0340	19 XH 300	2F	St	19	134,41	131,62	146	100	92	110	28	402	9,20
M0341	20 XH 300	2F	St	20	141,49	138,69	154	100	92	110	28	403	10,61
M0342	21 XH 300	2F	St	21	148,56	145,77	160	110	92	110	28	404	11,87
M0343	22 XH 300	2F	St	22	155,64	152,84	168	110	92	110	28	405	13,08
M0344	24 XH 300	2F	St	24	169,79	166,99	183	120	92	110	28	406	15,77
M0345	25 XH 300	2F	St	25	176,86	174,07	188	120	92	110	28	407	17,13
M0346	26 XH 300	2F	St	26	183,93	181,14	198	120	92	110	28	409	18,55
M0347	27 XH 300	2F	St	27	191,01	188,22	200	120	92	110	28	410	19,90
M0348	28 XH 300	2F	St	28	198,09	195,29	211	150	92	110	28	411	22,27
M0349	30 XH 300	2F	St	30	212,23	209,44	226	150	92	110	28	412	25,39
M0350	32 XH 300	2F	St	32	226,38	223,59	240	150	92	110	28	414	28,73
M0351	34 XH 300	2F	St	34	240,53	237,74	256	150	92	110	28	415	34,20

KOŁA ZĘBATE O PODZIAŁCE CALOWEJ

ISO 5294



XH 400

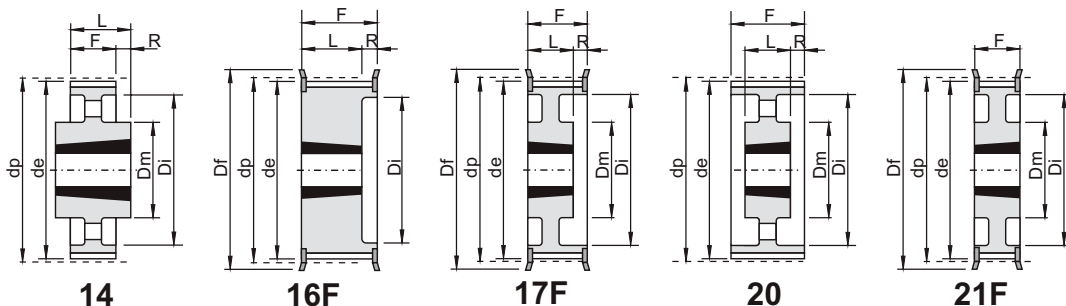
podziałka: 7/8" (22,22 mm)

koła dla pasa o szerokości: 4" (101,6 mm)

kod	typ	rysunek	materiał	Z	dp	de	Df	Dm	F	L	d	nr flanszy	[kg]
M0352	18 XH 400	2F	St	18	127,34	124,55	138	100	119	132	32	401	9,60
M0353	19 XH 400	2F	St	19	134,41	131,62	146	100	119	132	32	402	10,80
M0354	20 XH 400	2F	St	20	141,49	138,69	154	100	119	132	32	403	12,87
M0355	21 XH 400	2F	St	21	148,56	145,77	160	110	119	132	32	404	14,42
M0356	22 XH 400	2F	St	22	155,64	152,84	168	110	119	132	32	405	15,44
M0357	24 XH 400	2F	St	24	169,79	166,99	183	120	119	132	32	406	19,22
M0358	25 XH 400	2F	St	25	176,86	174,07	188	120	119	132	32	407	21,05
M0359	26 XH 400	2F	St	26	183,93	181,14	198	120	119	132	32	409	22,80
M0360	27 XH 400	2F	St	27	191,01	188,22	200	120	119	132	32	410	24,66
M0361	28 XH 400	2F	St	28	198,09	195,29	211	150	119	132	32	411	27,23
M0362	30 XH 400	2F	St	30	212,23	209,44	226	150	119	132	32	412	31,30
M0363	32 XH 400	2F	St	32	226,38	223,59	240	150	119	132	32	414	35,20
M0364	34 XH 400	2F	St	34	240,53	237,74	256	150	119	132	32	415	40,00

KOŁA ZĘBATE POD TULEJĘ TAPER LOCK

ISO 5294



H 100

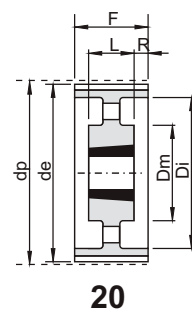
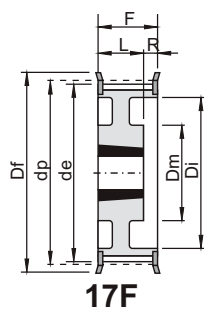
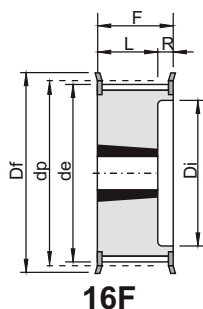
podziałka: 1/2" (12,7 mm)

koła dla pasa o szerokości: 1" (25,4 mm)

kod	typ	rysunek	materiał	Z	tuleja	otwór max	dp	de	Df	Dm	Di	F	L	R	nr flanszy	[kg]
M0428	TL 16 H 100	16F	St	16	1108	28	64,68	63,31	71	-	45,00	31,00	22,00	9,00	311	0,42
M0429	TL 18 H 100	16F	St	18	1210	32	72,77	71,39	79	-	52,00	31,00	25,00	6,00	313	0,49
M0430	TL 19 H 100	16F	St	19	1210	32	76,81	75,44	83	-	56,00	31,00	25,00	6,00	314	0,62
M0431	TL 20 H 100	16F	St	20	1210	32	80,85	79,48	87	-	60,00	31,00	25,00	6,00	315	0,73
M0432	TL 21 H 100	16F	St	21	1210	32	84,89	83,52	91	-	64,00	32,00	25,00	7,00	316	0,80
M0433	TL 22 H 100	16F	St	22	1210	32	88,94	87,56	93	-	67,00	32,00	25,00	7,00	317	0,94
M0434	TL 23 H 100	16F	St	23	1610	42	92,98	91,61	97	-	70,00	32,00	25,00	7,00	318	0,97
M0435	TL 24 H 100	16F	St	24	1610	42	97,02	95,65	103	-	73,50	32,00	25,00	7,00	320	1,05
M0436	TL 25 H 100	16F	St	25	1610	42	101,06	99,69	106	-	77,00	32,00	25,00	7,00	321	1,10
M0437	TL 26 H 100	16F	St	26	1610	42	105,11	103,73	111	-	82,00	32,00	25,00	7,00	322	1,20
M0438	TL 27 H 100	16F	St	27	1610	42	109,15	107,78	115	-	85,00	32,00	25,00	7,00	323	1,35
M0439	TL 28 H 100	16F	St	28	1610	42	113,19	111,82	119	-	90,50	32,00	25,00	7,00	325	1,50
M0440	TL 30 H 100	16F	St	30	1610	42	121,28	119,90	127	-	98,00	32,00	25,00	7,00	327	1,78
M0441	TL 32 H 100	17F	St	32	1610	42	129,36	127,99	135	90	106,00	32,00	25,00	7,00	328	2,05
M0442	TL 36 H 100	17F	St	36	1610	42	145,53	144,16	152	92	121,00	32,00	25,00	7,00	334	2,80
M0443	TL 40 H 100	17F	St	40	1610	42	161,70	160,33	168	92	138,00	32,00	25,00	7,00	338	3,65
M0444	TL 44 H 100	21F	St	44	2012	50	177,87	176,50	184	106	152,00	32,00	32,00	-	339	3,86
M0445	TL 48 H 100	21F	St	48	2012	50	194,04	192,67	200	106	169,00	32,00	32,00	-	342	4,20
M0446	TL 60 H 100	20	GG	60	2012	50	242,55	241,18	-	106	223,00	34,00	32,00	1,00	-	3,76
M0447	TL 72 H 100	20	GG	72	2012	50	291,06	289,69	-	106	270,00	34,00	32,00	1,00	-	4,88
M0448	TL 84 H 100	20	GG	84	2012	50	339,57	338,20	-	106	318,00	34,00	32,00	1,00	-	6,12
M0449	TL 96 H 100	14	GG	96	2517	60	388,08	386,71	-	119	366,00	34,00	45,00	5,50	-	7,95
M0450	TL120H 100	14	GG	120	2517	60	485,10	483,73	-	119	462,00	34,00	45,00	5,50	-	10,05

KOŁA ZĘBATE POD TULEJĘ TAPER LOCK

ISO 5294



H 150

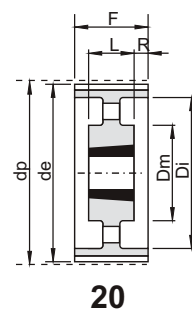
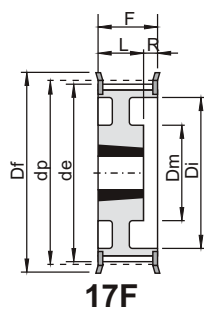
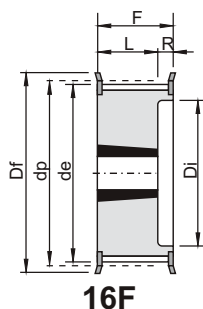
podziałka: 1/2" (12,7 mm)

koła dla pasa o szerokości: 1"1/2 (38,1 mm)

kod	typ	rysunek	materiał	Z	tuleja	otwór max	dp	de	Df	Dm	Di	F	L	R	nr flanszy	[kg]
M0451	TL 18 H 150	16F	St	18	1210	32	72,77	71,39	79	-	52,00	45,00	25,00	20,00	313	0,60
M0452	TL 19 H 150	16F	St	19	1210	32	76,81	75,44	83	-	56,00	45,00	25,00	20,00	314	0,72
M0453	TL 20 H 150	16F	St	20	1210	32	80,85	79,48	87	-	60,00	45,00	25,00	20,00	315	0,83
M0454	TL 21 H 150	16F	St	21	1210	32	84,89	83,52	91	-	64,00	45,00	25,00	20,00	316	1,00
M0455	TL 22 H 150	16F	St	22	1210	32	88,94	87,56	93	-	67,00	45,00	25,00	20,00	317	1,25
M0456	TL 23 H 150	16F	St	23	1610	42	92,98	91,61	97	-	70,00	45,00	25,00	20,00	318	1,05
M0457	TL 24 H 150	16F	St	24	1610	42	97,02	95,65	103	-	73,50	45,00	25,00	20,00	320	1,10
M0458	TL 25 H 150	16F	St	25	1610	42	101,06	99,69	106	-	77,00	45,00	25,00	20,00	321	1,30
M0459	TL 26 H 150	16F	St	26	1610	42	105,11	103,73	111	-	82,00	45,00	25,00	20,00	322	1,42
M0460	TL 27 H 150	16F	St	27	1610	42	109,15	107,78	115	-	85,00	45,00	25,00	20,00	323	1,65
M0461	TL 28 H 150	16F	St	28	1610	42	113,19	111,82	119	-	90,50	45,00	25,00	20,00	325	1,88
M0462	TL 30 H 150	16F	St	30	1610	42	121,28	119,90	127	-	98,00	45,00	25,00	20,00	327	2,05
M0463	TL 32 H 150	17F	St	32	1610	42	129,36	127,99	135	90	106,00	45,00	25,00	20,00	328	2,35
M0464	TL 36 H 150	17F	St	36	1610	42	145,53	144,16	152	92	121,00	45,00	25,00	20,00	334	3,20
M0465	TL 40 H 150	17F	St	40	1610	42	161,70	160,33	168	92	138,00	45,00	25,00	20,00	338	4,10
M0466	TL 44 H 150	17F	St	44	2012	50	177,87	176,50	184	106	152,00	45,00	32,00	13,00	339	4,50
M0467	TL 48 H 150	17F	St	48	2012	50	194,04	192,67	200	106	169,00	45,00	32,00	13,00	342	4,80
M0468	TL 60 H 150	20	GG	60	2012	50	242,55	241,18	-	106	223,00	46,00	32,00	7,00	-	4,51
M0469	TL 72 H 150	20	GG	72	2012	50	291,06	289,69	-	106	270,00	46,00	32,00	7,00	-	6,16
M0470	TL 84 H 150	20	GG	84	2012	50	339,57	338,20	-	106	320,00	46,00	32,00	7,00	-	7,40
M0471	TL 96 H 150	20	GG	96	2517	60	388,08	386,71	-	119	366,00	46,00	45,00	0,50	-	9,87
M0472	TL120H 150	20	GG	120	2517	60	485,10	483,73	-	119	462,00	46,00	45,00	0,50	-	13,50

KOŁA ZĘBATE POD TULEJĘ TAPER LOCK

ISO 5294



H 200

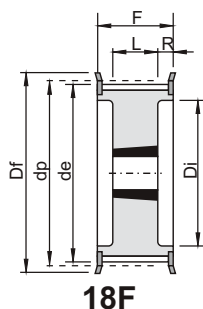
podziałka: 1/2" (12,7 mm)

koła dla pasa o szerokości: 2" (50,8 mm)

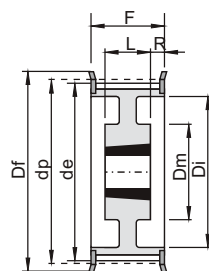
kod	typ	rysunek	materiał	Z	tuleja	otwór max	dp	de	Df	Dm	Di	F	L	R	nr flanszy	[kg]
M0473	TL 18 H 200	16F	St	18	1210	32	72,77	71,39	79	-	52,00	58,00	25,00	25,00	313	0,84
M0474	TL 19 H 200	16F	St	19	1210	32	76,81	75,44	83	-	56,00	58,00	25,00	25,00	314	0,96
M0475	TL 20 H 200	16F	St	20	1610	42	80,85	79,48	87	-	60,00	58,00	25,00	25,00	315	0,93
M0476	TL 21 H 200	16F	St	21	1610	42	84,89	83,52	91	-	64,00	58,00	25,00	25,00	316	1,07
M0477	TL 22 H 200	16F	St	22	1610	42	88,94	87,56	93	-	67,00	58,00	25,00	25,00	317	1,25
M0478	TL 23 H 200	16F	St	23	1610	42	92,98	91,61	97	-	70,00	58,00	25,00	25,00	318	1,40
M0479	TL 24 H 200	16F	St	24	1610	42	97,02	95,65	103	-	73,50	58,00	25,00	25,00	320	1,55
M0480	TL 25 H 200	16F	St	25	1610	42	101,06	99,69	106	-	77,00	58,00	25,00	25,00	321	1,71
M0481	TL 26 H 200	16F	St	26	1610	42	105,11	103,73	111	-	82,00	58,00	25,00	25,00	322	1,84
M0482	TL 27 H 200	16F	St	27	1610	42	109,15	107,78	115	-	85,00	58,00	25,00	25,00	323	2,06
M0483	TL 28 H 200	16F	St	28	1610	42	113,19	111,82	119	-	90,50	58,00	25,00	25,00	325	2,17
M0484	TL 30 H 200	16F	St	30	1610	42	121,28	119,90	127	-	98,00	58,00	25,00	25,00	327	2,60
M0485	TL 32 H 200	16F	St	32	2012	50	129,36	127,99	135	-	106,00	58,00	32,00	32,00	328	2,95
M0486	TL 36 H 200	17F	St	36	2012	50	145,53	144,16	152	102	121,00	58,00	32,00	32,00	334	3,62
M0487	TL 40 H 200	17F	St	40	2012	50	161,70	160,33	168	106	138,00	58,00	32,00	32,00	338	4,33
M0488	TL 44 H 200	17F	St	44	2012	50	177,87	176,50	184	106	152,00	58,00	32,00	32,00	339	5,33
M0489	TL 48 H 200	17F	St	48	2517	60	194,04	192,67	200	119	169,00	58,00	45,00	45,00	342	6,47
M0490	TL 60 H 200	20	GG	60	2517	60	242,55	241,18	-	119	223,00	60,00	45,00	45,00	-	5,86
M0491	TL 72 H 200	20	GG	72	2517	60	291,06	289,69	-	119	270,00	60,00	45,00	45,00	-	7,42
M0492	TL 84 H 200	20	GG	84	2517	60	339,57	338,20	-	119	320,00	60,00	45,00	45,00	-	8,73
M0493	TL 96 H 200	20	GG	96	2517	60	388,08	386,71	-	119	366,00	60,00	45,00	45,00	-	10,83
M0494	TL120H 200	20	GG	120	2517	60	485,10	483,73	-	119	462,00	60,00	45,00	45,00	-	14,95

KOŁA ZĘBATE POD TULEJĘ TAPER LOCK

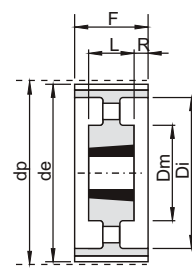
ISO 5294



18F



19F



20

H 300

podziałka: 1/2" (12,7 mm)

koła dla pasa o szerokości: 3" (76,2 mm)

kod	typ	rysunek	materiał	Z	tuleja	otwór max	dp	de	Df	Dm	Di	F	L	R	nr flanszy	[kg]
M0495	TL 20 H 300	18F	St	20	1615	42	80,85	79,48	87	-	64,50	84,00	38,00	23,00	315	1,22
M0496	TL 21 H 300	18F	St	21	1615	42	84,89	83,52	91	-	65,00	84,00	38,00	23,00	316	1,52
M0497	TL 22 H 300	18F	St	22	1615	42	88,94	87,56	93	-	67,00	84,00	38,00	23,00	317	1,80
M0498	TL 23 H 300	18F	St	23	1615	42	92,98	91,61	97	-	70,00	84,00	38,00	23,00	318	2,04
M0499	TL 24 H 300	18F	St	24	1615	42	97,02	95,65	103	-	73,50	84,00	38,00	23,00	320	2,29
M0500	TL 25 H 300	18F	St	25	1615	42	101,06	99,69	106	-	77,00	84,00	38,00	23,00	321	2,54
M0501	TL 26 H 300	18F	St	26	1615	42	105,11	103,73	111	-	82,00	84,00	38,00	23,00	322	2,73
M0502	TL 27 H 300	18F	St	27	2012	50	109,15	107,78	115	-	85,00	84,00	32,00	26,00	323	2,54
M0503	TL 28 H 300	18F	St	28	2012	50	113,19	111,82	119	-	90,50	84,00	32,00	26,00	325	2,68
M0504	TL 30 H 300	18F	St	30	2012	50	121,28	119,90	127	-	98,00	84,00	32,00	26,00	327	3,21
M0505	TL 32 H 300	18F	St	32	2517	60	129,36	127,99	135	-	106,00	84,00	45,00	19,50	328	3,58
M0506	TL 36 H 300	18F	St	36	2517	60	145,53	144,16	152	-	121,00	84,00	45,00	19,50	334	4,99
M0507	TL 40 H 300	18F	St	40	2517	60	161,70	160,33	168	-	138,00	84,00	45,00	19,50	338	6,50
M0508	TL 44 H 300	19F	St	44	2517	60	177,87	176,50	184	119	152,00	86,00	45,00	20,50	339	7,55
M0509	TL 48 H 300	19F	St	48	2517	60	194,04	192,67	200	119	169,00	86,00	45,00	20,50	342	8,66
M0510	TL 60 H 300	20	GG	60	2517	60	242,55	241,18	-	119	223,00	86,00	45,00	20,50	-	7,42
M0511	TL 72 H 300	20	GG	72	2517	60	291,06	289,69	-	119	270,00	86,00	45,00	20,50	-	9,33
M0512	TL 84 H 300	20	GG	84	2517	60	339,57	338,20	-	119	320,00	86,00	45,00	20,50	-	11,19
M0513	TL 96 H 300	20	GG	96	3030	75	388,08	386,71	-	150	362,00	86,00	76,00	5,00	-	17,96
M0514	TL120H 300	20	GG	120	3030	75	485,10	483,73	-	150	460,00	86,00	76,00	5,00	-	22,23